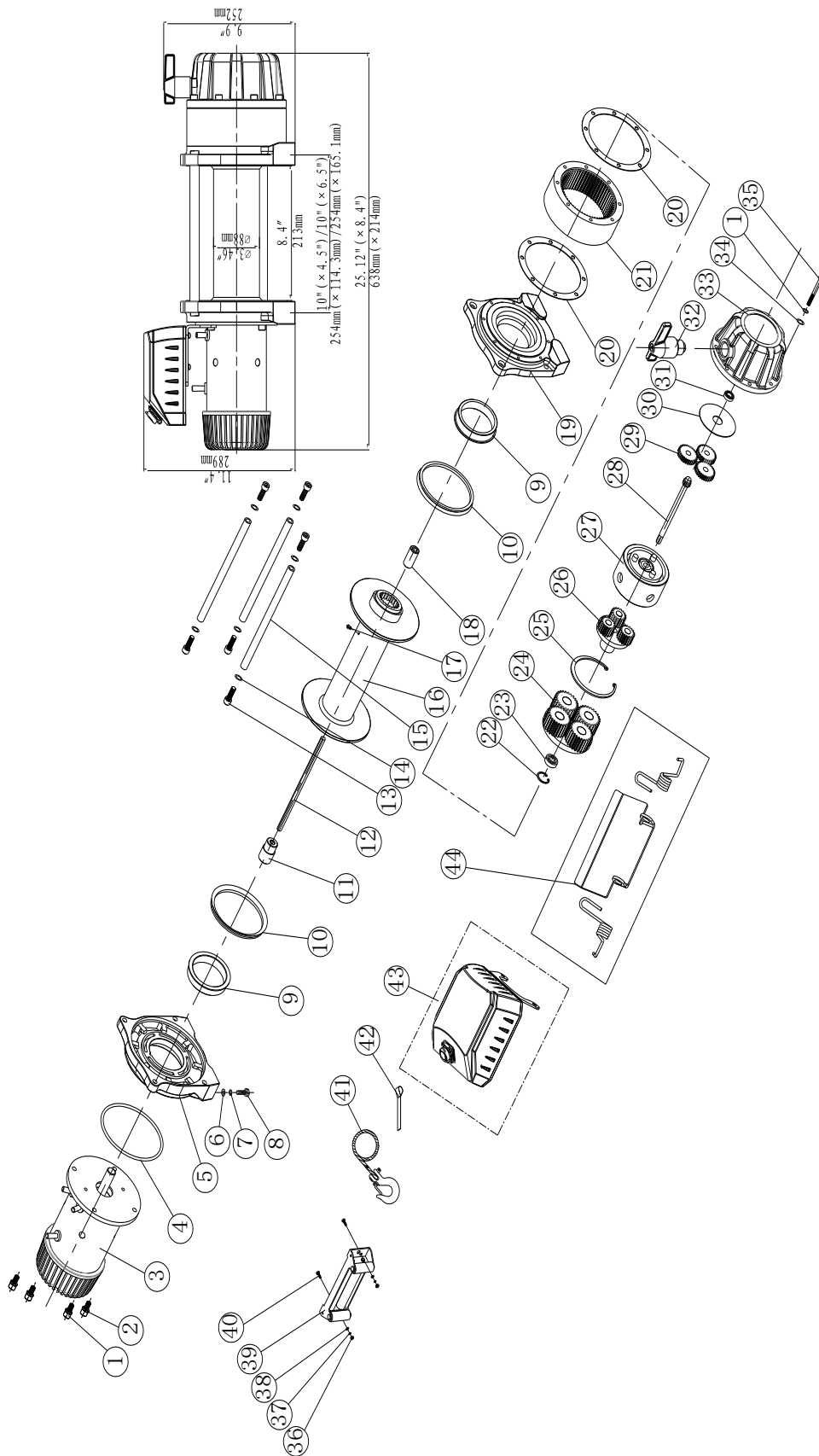


# WINCH ASSEMBLY DRAWING (T1000-2200)



## WINCH PARTS LIST ( T1000-2200 )

No.	Part #	Qty	Description	Remark
1	T2200001	12	Lock Washer Φ8	
2	T2200002	4	Screw M8x 25	
3	T2200100	1	Motor Assembly	
4	T2200003	1	Ring Seals	
5	T2200004	1	Motor Bracket	
6	T2200005	8	Flat Washer Φ12	
7	T2200006	8	Lock Washer Φ12	
8	T2200007	8	Cap Screw M12 x 30	
9	T2200008	2	Bushing-Drum	
10	T2200009	2	Ring Seals	
11	T2200010	1	Coupling	
12	T2200011	1	Six Angle Bar	
13	T2200012	6	Screw M10 x 30	
14	T2200013	6	Lock Washer Φ10	
15	T2200014	3	Tie Bar	
16	T2200200	1	Drum Assembly	
17	T2200015	1	Screw M8×10	
18	T2200016	1	Coupling	
19	T2200017	1	End Bearing	
20	T2200018	2	Gasket	
21	T2200019	1	Gear—Ring	
22	T2200020	1	Circlip For Hole	
23	T2200021	1	Bearing	
24	T2200300	1	Gear Carrier Assembly ( Output )	
25	T2200022	1	Circlip For Hole	
26	T2200400	1	Gear Carrier Assembly ( Intermediate )	
27	T2200500	1	Brake/ Shaft Assembly	
28	T2200023	1	Gear—Input Sun	
29	T2200024	3	Planetary Gear	
30	T2200025	1	Trust Washer	
31	T2200026	1	Bearing	
32	T2200600	1	Clutch Assembly	
33	T2200027	1	Gear—Housing	
34	T2200028	8	Flat Washer Φ8	
35	T2200029	8	Screw M8x 90	
36	T2200030	2	Locknut M10	
37	T2200031	2	Lock Washer Φ10	
38	T2200032	2	Flat Washer Φ10	
39	T2200700	1	Roller Fairlead	
40	T2200033	2	Hex Bolt M10x 35	
41	T2200800	1	Cable Assembly	
42	T2200034	1	Strap	
43	T2200900	1	Control Section	
44	T2201000	1	Tensioned Of Steel Wire Supplied Assembly	