

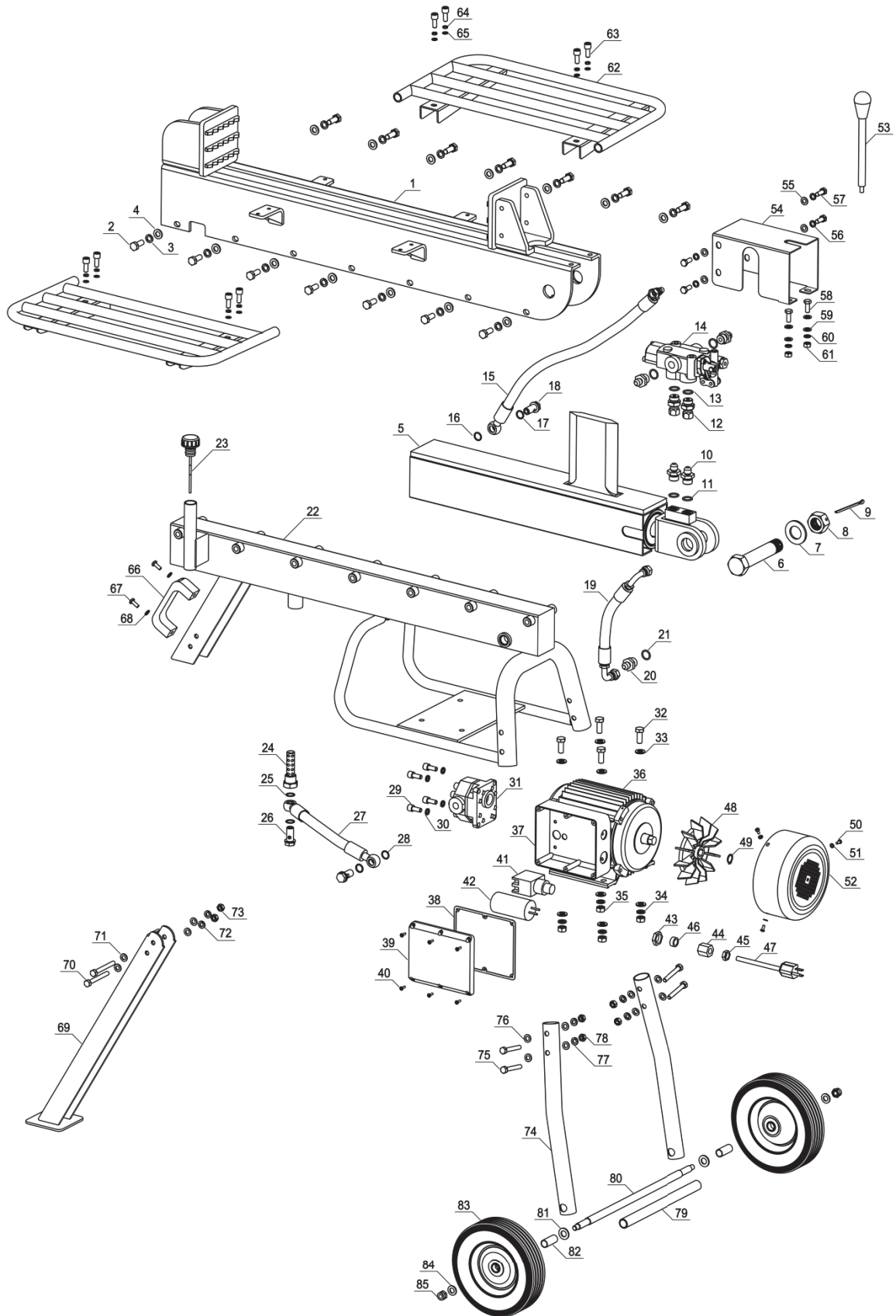
## TECHNICAL SPECIFICATIONS

Electrical requirements	115V, 60Hz
Power output	1800W
Rated current	15A
Motor speed	3400 RPM
Power cable	SJTW 12 AWG (3.3mm <sup>2</sup> )

Max splitting force*	10 ton	
Max splitting length	20.5 in	
Max splitting diameter	12 in	
Hydraulic pressure	3200 PSI	
Cylinder bore	2.8 in	
Cycle time*	Feed	16 sec
	Retract	13 sec
Max cylinder stroke	18.5 in	
Oil capacity	3.2 L	
Machine dimensions (LxWxH) (in)	46x26x36	
Machine net weight	214 lbs	

\*Tonnage and cycle times may vary dependent upon electricity supply, mechanical and environmental conditions.

# EXPLODED DIAGRAM & PARTS LIST



REF #	PART #	PART NAME	SPECIFICATIONS	QTY PER SECTION
1	310-755	Machine Body w/ End Plates		1
2	710-520	Hex head bolt	Zinc, M10*25	14
3	750-401	Spring Washer	Zinc, M10*3	14
4	750-525	Flat Washer	Zinc, M10*1.5	14
5	530-486	Cylinder w/ two blade splitting wedge	Ø70*580*6.5	1
6	710-192	Bored Hex Head Bolt	Zinc, M27*133	1
7	750-623	Flat Washer	Zinc, M27*4	1
8	720-815	Bored Nut	Zinc, M27	1
9	760-721	Split Pin	Ø 4*45	1
10	510-211	Hydraulic Adapter	JCM06-OBM08	4
11	730-077	O Seal Ring	Ø22*2.4	4
12	510-224	Hydraulic Adapter	OBM08-JCSF06	2
13	730-077	O Seal Ring	Ø22*2.4	2
14	520-766	Hydraulic Valve		1
15	560-457	Hydraulic hose (Pump - Valve)		1
16	730-24	O Seal Ring	Ø18*1.9	1
17	750-158	Copper Seal Washer	M14*1	1
18	710-896	Oil Tube Screw	Black Oxide, M14*30*1.5	1
19	560-431	Hydraulic hose (Valve - Reservoir)		1
20	510-211	Hydraulic Adapter	JCM06-OBM08	1
21	730-077	O Seal Ring	Ø22*2.4	1
22	540-944	Hydraulic Reservoir w/ Motor Bracket		1
23	540-325	Oil Dipstick w/ Breather Cap	Ø4*115	1
24	540-038	Inlet Oil Filter	M22x1.5	1
25	750-158	Copper Seal Washer	M14*1	3
26	710-896	Oil Tube Screw	Black Oxide, M14*30*1.5	2
27	560-469	Hydraulic Hose (Reservoir – Pump)		1
28	730-624	O Seal Ring	Ø18*1.9	1
29	710-895	Inner Hex Head Bolt	Black Oxide, M8*20	4
30	750-075	Spring Washer	Black Oxide, M8*2.5	4
31	550-203	Pump		1
32	710-520	Hex Head Bolt	Zinc, M10*25	4
33	750-525	Flat Washer	Zinc, M10*1.5	8
34	750-401	Spring Washer	Zinc, M10*3	4
35	720-124	Nut	Zinc, M10	4
36	910-263	Electric Motor	2.5 HP	1
37	920-011	Connecting Box (Bottom)		1
38	920-506	Connecting Box (Rubber Ring)		1
39	920-853	Connecting Box (Cover)		1
40	740603	Cross Recess Pan Head Screw	Black Oxide, M4*10	6
41	920-943	Power Switch		1
42	920-981	Capacitor	80uf	1
43	930-154	Cable Fastener Nut		1
44	930-807	Cable Fastener		1
45	930-233	Cable Fastener Bolt		1
46	930-512	Cable Fastener Ring		1

REF #	PART #	PART NAME	SPECIFICATIONS	QTY PER SECTION
47	930-183	Power Cable	STJW 3/C 12AWG, Ø3.31*200	1
48	910-194	Fan		1
49	540-311	Circlip for Shaft	Ø16	1
50	740-477	Cross Recess Pan Head Screw	Zinc, M4*10	3
51	750-270	Flat Washer	Zinc, M4*1	3
52	910-153	Fan Cover	Ø174	1
53	520-405	Control Handle Lever	Ø15*264	1
54	350-247	Valve cover		1
55	750-525	Flat Washer	Zinc, M10*1.5	4
56	750-401	Spring Washer	Zinc, M10*3	4
57	710-516	Hex Head Bolt	Zinc, M10*20	4
58	710-637	Hex Head Bolt	Zinc, M8*20	2
59	750-638	Flat Washer	Zinc, M8*1	4
60	750-834	Spring Washer	Zinc, M8*2.5	2
61	720-135	Nut	Zinc, M8	2
62	320-913	Log Tray		2
63	710-895	Inner Hex Head Bolt	Black Oxide, M8*20	8
64	750-075	Spring Washer	Black Oxide, M8*2.5	8
65	750-160	Flat Washer	Black Oxide, M8*1	8
66	320-511	Towing Handle		1
67	740-313	Cross Recess Pan Head Screw	Zinc, M6*15	2
68	750-273	Flat Washer	Zinc, M6*1	2
69	320-817	Jack Stand		1
70	710-642	Hex Head Bolt	Zinc, M8*70	2
71	750-638	Flat Washer	Zinc, M8*1	4
72	750-834	Spring Washer	Zinc, M8*2.5	2
73	720-135	Nut	Zinc, M8	2
74	340-097	Wheel Stand		2
75	710-690	Hex Head Bolt	Zinc, M8*55	4
76	750-638	Flat Washer	Zinc, M8*1	8
77	750-834	Spring Washer	Zinc, M8*2.5	4
78	720-135	Nut	Zinc, M8	4
79	340-254	Axle Bushing	Ø20*2*270	1
80	340-089	Wheel Axle	Ø15*431	1
81	750-146	Flat Washer	Zinc, ½" *2	2
82	340-132	Bearing spacer	Ø 16*1.2*36.8	2
83	330-375	Wheel	8**2"	2
84	750-525	Flat Washer	Zinc, M10*1.5	2
85	720-120	Lock Nut	Zinc, M10	2