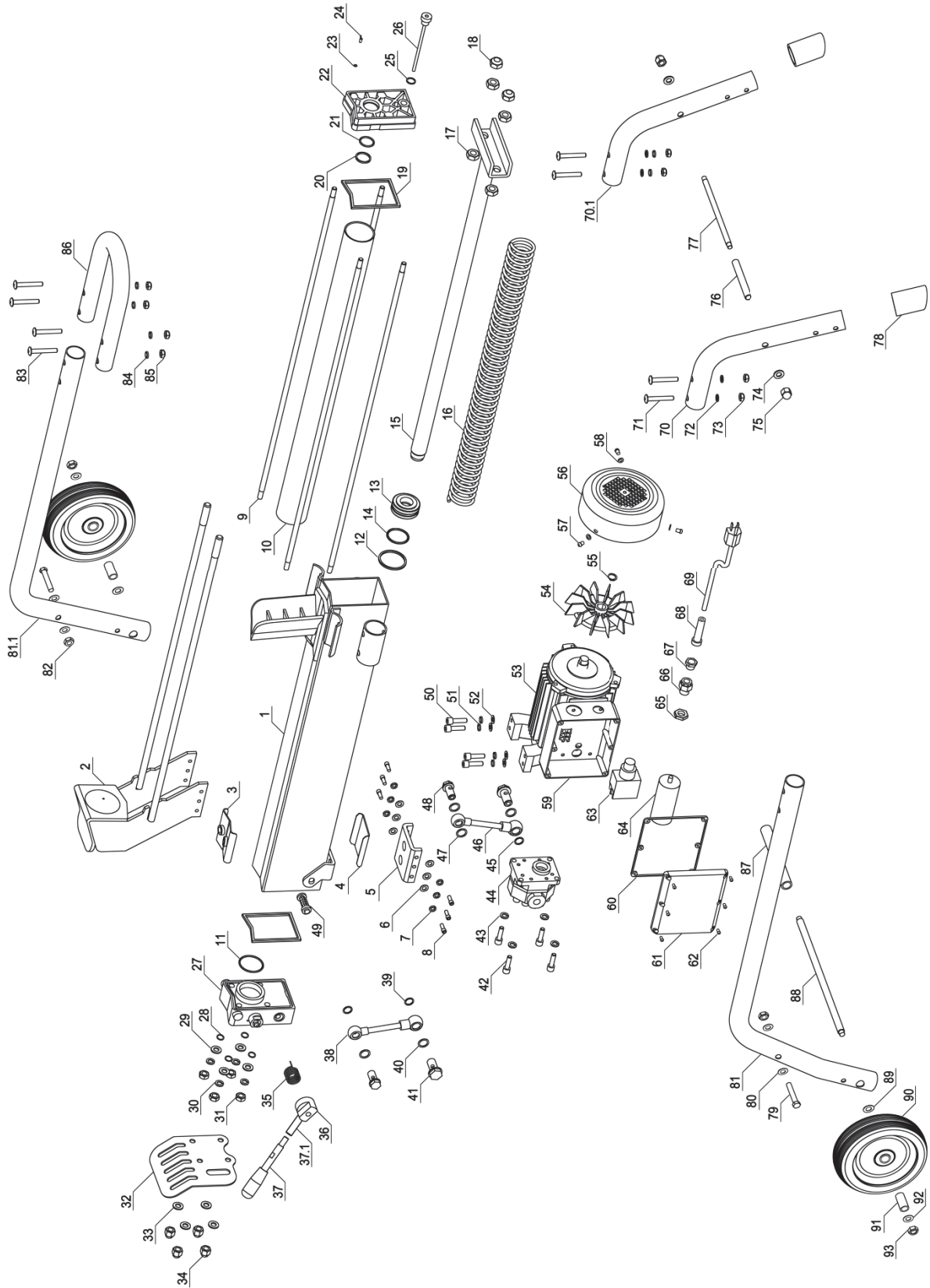


EXPLODED DIAGRAM & PARTS LIST



REF #	PART #	PART NAME	SPECIFICATIONS	QTY PER SECTION
1	310-325	Machine Body w/ End Wedge	7 ton	1
2	530-101	Ram Cap & Shaft		1
3	530-475	Upper Nylon Cushion		1
4	530-898	Lower Nylon Cushion		1
5	530-616	Base Plate of Ram		1
6	750-520	Flat Washer	Black Oxide, M10*1.5	6
7	750-355	Spring Washer	Black Oxide, M10*3	6
8	710-432	Inner Hex Bolt	Black Oxide, M10*25	6
9	710-685	Double-Screw Bolt	M10*813	4
10	530-322	Cylinder Tube	Ø55*743*2.5	1
11	730-847	O Seal Ring	Ø55*3.1	1
12	730-446	Seal Cover	Ø55	1
13	530-624	Piston Head	Ø 54.5*22	1
14	730-924	O Seal Ring	Ø50*3.5	1
15	530-434	Piston Shaft w/ Connecting Plate		1
16	530-580	Retracting Spring		1
17	720-156	Nut	Zinc, M14	4
18	720-884	Lock Nut	Zinc, M14	2
19	730-772	Paper Seal Ring		2
20	730-186	O Seal Ring	Ø30*2.65	1
21	730-139	Dirt Proof Ring	Ø30	1
22	540-853	Front Reservoir Cover		1
23	730-094	O Seal Ring	Ø5*1	1
24	540-537	Vent Plug	Zinc, M4*10	1
25	750-158	Copper Seal Washer	M14*1	1
26	540-333	Oil Dipstick w/ Oil Drain Bolt	Ø5*190 / M14*12 *1.5	1
27	520-974	Hydraulic Valve		1
28	730-198	O Seal Ring	Ø14*2.4	4
29	750-532	Flat Washer	Black Oxide, M10*2.5	4
30	750-355	Spring Washer	Black Oxide, M10*3	4
31	720-465	Nut	Black Oxide, M10	4
32	350-233	Position Shield		1
33	750-525	Flat Washer	Zinc, M10*1.5	4
34	720-678	Snap Head Nut	Zinc, M10	4
35	520-596	Torsion Spring		1
36	520-293	Control Handle Bracket		1
37	520-401	Control Handle Lever w/ Grip	Ø12.5*116	1
37.1	520-400	Short Lever	Ø12.5*54	1
38	560-587	Oil Tube	Ø14 - Ø10*100*2	1
39	730-624	O Seal Ring	Ø18*1.9	2
40	750-158	Copper Seal Washer	M14*1	2
41	710-896	Oil Tube Screw	Black Oxide, M14*30*1.5	2
42	710-895	Inner Hex Head Bolt	Black Oxide, M8*20	4
43	750-075	Flat Washer	Black Oxide, M8*2.5	4
44	550-203	Hydraulic Pump		1
45	730-624	O Seal Ring	Ø18*1.9	1
46	560-587	Oil Tube	Ø14 - Ø10*100*2	1
47	750-158	Copper Seal Washer	M14*1	3

REF #	PART #	PART NAME	SPECIFICATIONS	QTY PER SECTION
48	710-896	Oil Tube Screw	Black Oxide, M14*30*1.5	2
49	540-311	Oil Filter		1
50	710-541	Inner Hex Head Bolt	Black Oxide, M8*30	4
51	750-075	Spring Washer	Black Oxide, M8*2.5	4
52	750-160	Flat Washer	Black Oxide, M8*1	4
53	910-256	Electric Motor 2 HP		
54	910-194	Fan		1
55	760-548	Circlip for Shaft	Ø16	1
56	910-154	Fan Cover	Ø162	1
57	750-270	Flat Washer	Zinc, M4*1	3
58	740-477	Cross Recess Pan Head Screw	Zinc, M4*10	3
59	920-011	Connecting Box (Bottom)		1
60	920-506	Connecting Box (Rubber Ring)		1
61	920-853	Connecting Box (Cover)		1
62	740-603	Cross Recess Pan Head Screw	Black Oxide, M4*10	6
63	920-943	Power Switch		1
64	920-980	Capacitor	60uf	1
65	930-154	Cable Fastener Nut		1
66	930-807	Cable Fastener		1
67	930-233	Cable Fastener Bolt		1
68	930-511	Cable Bushing		1
69	930-182	Power Cable	STJW 3/C 14AWG, Ø2.08*1600	1
70	320-812	Front Leg (R)		2
70.1	320-811	Front Leg (L)		2
71	740-526	Cross Recess Pan Head Screw	Zinc, M8*55	4
72	750-638	Flat Washer	Zinc, M8*1	4
73	720-500	Lock Nut	Zinc, M8	4
74	750-525	Flat Washer	Zinc, M10*1.5	2
75	720-678	Snap Head Nut	Zinc, M10	2
76	320-666	Front Support Bar Bushing	Ø13*1*105	1
77	320-563	Front Support Bar	Ø10*205	1
78	320-825	Bumper		2
79	740-526	Cross Recess Pan Head Screw	Zinc, M8*55	2
80	750-638	Flat Washer	Zinc, M8*1	4
81	320-414	Joint Leg and Log Holder (R)		2
81.1	320-413	Joint Leg and Log Holder (L)		2
82	720-500	Lock Nut	Zinc, M8	2
83	740-526	Cross Recess Pan Head Screw	Zinc, M8*55	4
84	750-638	Flat Washer	Zinc, M8*1	4
85	720-500	Lock Nut	Zinc, M8	4
86	320-748	U Shape Towing Handle		1
87	340-090	Wheel Axle	Ø12.7*335	1
88	340-250	Axle Bushing	Ø16*1*168	1
89	750-146	Flat Washer	Zinc, ½" *2	2
90	330-214	Wheel	7"*1.8"	2
91	340-132	Bearing spacer	Ø 16*1.2*36.8	2
92	750-525	Flat Washer	Zinc, M10*1.5	2
93	720-120	Lock Nut	Zinc, M10	2