

# BOSS<sup>®</sup>

INDUSTRIAL

LOG SPLITTERS

SPLIT LOGS  
**LIKE A BOSS**  
BUILT TO SPLIT THE TOUGHEST LOGS



# PRODUCT CATALOG

# ELECTRIC LOG SPLITTERS

## 5 TON

### EC5T20

- 5 Tons of Splitting Force
- Log Capacity: 20.5" (L) \* 10"(Dia)
- One Hand Operation for Convenience and Safety
- Automatic Ram Return
- Wide Tube Log Holders
- Pure Copper Wiring Motor, 115 V, 1.8 HP
- N.W. / G.W. : 107 / 112 lbs



## 7 TON

### ES7T20

- 7 Tons of Splitting Force
- Log Capacity: 20.5" (L) \* 10"(Dia)
- One Hand Operation for Convenience and Safety
- Automatic Ram Return
- Sturdy Tube Log Holders
- Pure Copper Wiring Motor, 2 HP
- N.W. / G.W. : 128 / 133 lbs



## 8 TON

### ED8T20

- 8 Tons of Splitting Force
- Log Capacity: 20.5" (L) \* 10.5"(Dia)
- Double Direction Splitting for Efficiency
- Sturdy Tube Log Holders
- Pure Copper Wiring Motor, 2 HP
- N.W. / G.W. : 160 / 204 lbs



## 10 TON

### ED10T20

- 10 Tons of Splitting Force
- Log Capacity: 20.5" (L) \* 13.5"(Dia)
- Double Direction Splitting for Efficiency
- Extra Large Tube Log Trays
- Built-in Stand
- Pure Copper Wiring Motor, 2.5 HP
- N.W. / G.W. : 214 / 246 lbs





# HORIZONTAL / VERTICAL GAS LOG SPLITTERS

## WD SERIES

### 25 TON

#### WD25T

- 25 Tons of Splitting Force
- Log Capacity: 25" (L) \* 14"(Dia)
- One Hand Operation
- Automatic Wedge Return
- Two Large Log Trays Included
- D.O.T. Tubeless wheel
- Log Splitter Cover Included
- Briggs & Stratton Engine, CR950, 208 cc
- N.W. / G.W. : 475 / 596 lbs



### 35 TON

#### WD35T

- 35 Tons of Splitting Force
- Log Capacity: 25" (L) \* 16"(Dia)
- One Hand Operation
- Automatic Wedge Return
- Two Large Log Trays Included
- D.O.T. Tubeless wheel
- Log Splitter Cover Included
- Briggs & Stratton Engine, XR1450, 306 cc
- N.W. / G.W. : 544 / 667 lbs



### 30 TON

#### WD30T

- 30 Tons of Splitting Force
- Log Capacity: 25" (L) \* 16"(Dia)
- One Hand Operation
- Automatic Wedge Return
- Two Large Log Trays Included
- D.O.T. Tubeless wheel
- Log Splitter Cover Included
- Briggs & Stratton Engine, XR1150, 250 cc
- N.W. / G.W. : 509 / 625 lbs



# HORIZONTAL / VERTICAL GAS LOG SPLITTERS

## GB SERIES

### 25 TON

#### GB25T26

- 25 Tons of Splitting Force
- Log Capacity: 26" (L) \* 16"(Dia)
- Automatic Wedge Return
- Extra Large Log Trays Included
- Tail Lights Included
- Oil Level Gauge Included
- Log Splitter Cover Included
- D.O.T. Tubeless Wheel
- Briggs & Stratton Engine, XR950, 208 cc
- N.W. / G.W. : 500 / 644 lbs



### 35 TON

#### GB35T26

- 35 Tons of Splitting Force
- Log Capacity: 26" (L) \* 18"(Dia)
- Automatic Wedge Return
- Extra Large Log Trays Included
- Tail Lights Included
- Oil Level Gauge Included
- Log Splitter Cover Included
- D.O.T. Tubeless Wheel
- Briggs & Stratton Engine, XR1450, 306 cc
- N.W. / G.W. : 582 / 724 lbs



### 30 TON

#### GB30T26

- 30 Tons of Splitting Force
- Log Capacity: 26" (L) \* 18"(Dia)
- Automatic Wedge Return
- Extra Large Log Trays Included
- Tail Lights Included
- Oil Level Gauge Included
- Log Splitter Cover Included
- D.O.T. Tubeless Wheel
- Briggs & Stratton Engine, XR1150, 250 cc
- N.W. / G.W. : 528 / 671 lbs





# DUAL ACTION GAS / 3-POINT HITCH LOG SPLITTERS

## 16 TON

### GD16T21

- 16 Tons of Splitting Force
- Log Capacity: 20.5" (L) \* 13.7"(Dia)
- Double Direction Splitting for Efficiency
- 5-6 Seconds per Split
- Extra Large Tube Log Trays
- Kohler Engine, SH265, 196 cc
- N.W. / G.W. : 342 / 405 lbs



## 13 TON

### 3PT13T21

- Cylinder Bore: 3"
- Recommended Tractor Hydraulic Flow: 3--8 GPM
- Recommended Tractor PSI: 2000 --3700
- Log Capacity: 20.5" (L) \* 13.7"(Dia)
- Extra Large Tube Log Trays
- 1/2" x 100" hoses included
- N.W. / G.W. : 172 / 242 lbs



## 20 TON

### GD20T24

- 20 Tons of Splitting Force
- Log Capacity: 24" (L) \* 16"(Dia)
- Double Direction Splitting for Efficiency
- 6-7 Seconds per Split
- Extra Large Log Trays
- Kohler Engine, SH265, 196 cc
- N.W. / G.W. : 449 / 512 lbs



## 16 TON

### 3PT16T21

- Cylinder Bore: 3.5"
- Recommended Tractor Hydraulic Flow: 5--10 GPM
- Recommended Tractor PSI: 2000 --3700
- Log Capacity: 20.5" (L) \* 13.7"(Dia)
- Extra Large Tube Log Trays
- 1/2" x 100" hoses included
- N.W. / G.W. : 198 / 268 lbs



# HORIZONTAL / VERTICAL 3-POINT HITCH LOG SPLITTERS

## 22 TON

### 3PT22TE

- Cylinder Bore: 4"
- Recommended Tractor Hydraulic Flow: 8--12 GPM
- Recommended Tractor PSI: 2000 --3700
- Log Capacity: 25" (L) \* 14"(Dia)
- Two Large Log Trays
- 1/2" x 100" hoses included
- N.W. / G.W. : 406 / 528 lbs



## 22 TON

### 3PT22T25

- Cylinder Bore: 4"
- Recommended Tractor Hydraulic Flow: 8--12 GPM
- Recommended Tractor PSI: 2000 --4000
- Log Capacity: 25" (L) \* 16"(Dia)
- Two Extra Large Log Trays
- 1/2" x 100" hoses included
- N.W. / G.W. : 442 / 565 lbs



## 28 TON

### 3PT28T25

- Cylinder Bore: 4.5"
- Recommended Tractor Hydraulic Flow: 10--15 GPM
- Recommended Tractor PSI: 2000 --4000
- Log Capacity: 25" (L) \* 16"(Dia)
- Two Extra Large Log Trays
- 1/2" x 100" hoses included
- N.W. / G.W. : 458 / 582 lbs



## 35 TON

### 3PT35T25

- Cylinder Bore: 5"
- Recommended Tractor Hydraulic Flow: 13--18 GPM
- Recommended Tractor PSI: 2000 --4000
- Log Capacity: 25" (L) \* 16"(Dia)
- Two Extra Large Log Trays
- 1/2" x 100" hoses included
- N.W. / G.W. : 496 / 620 lbs



# LOG SPLITTER ACCESSORIES

## 4 WAY CROSS WEDGES

### CW-S

- 4 lbs
- Compatible with:  
EC5T20, ES7T20,  
ED8T20



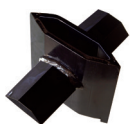
### CW-D1

- 10.5 lbs
- Compatible with:  
ED10T20



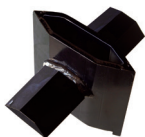
### CW-D2

- 13.5 lbs
- Compatible with:  
GD16T21, 3PT13/16T21



### CW-D3

- 17 lbs
- Compatible with:  
GD20T24



### CW-W

- 15 lbs
- Compatible with:  
WD Series, 3PT22TE



### CW-G

- 15.5 lbs
- Compatible with:  
GB Series,  
3PT22/28/35T25



## LOG TRAY

### LT-4

- 20 lbs
- Compatible with:  
ES7T20



## ENGINE GUARD

### EG-6

- 7.5 lbs
- Compatible with:  
GB Series



## LOG SPLITTER COVER

### CV-1

- 2 lbs
- Compatible with:  
GD, GB, WD Series,  
All 3PT



## STANDS & TRAILER JACKS

### FT-3

- 15 lbs
- Compatible with:  
EC5T20



### FT-5

- 11 lbs
- Compatible with:  
ES7T20



### FT-7

- 11 lbs
- Compatible with:  
ED8T20



### TJ-11

- 12 lbs
- Compatible with:  
WD, GB Series



### TJ-16 / TJ-20

- 15 lbs
- Compatible with:  
GD16T21 / GD20T24





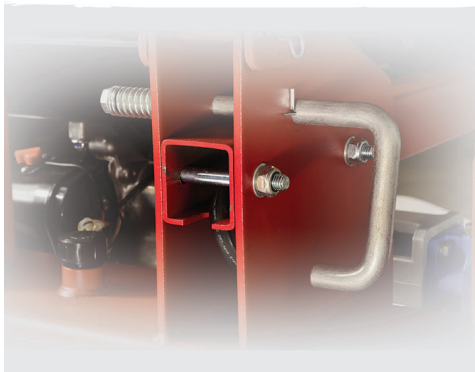
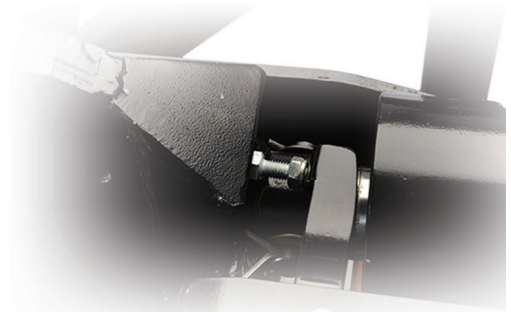


## LOG SPLITTERS

# BUILT TO SPLIT THE TOUGHEST WOOD

### PATENTED DESIGN

The hydraulic system is the heart of the log splitter and there's none better in the industry than Boss Industrial's patented designs. Our patented rotating valve vs. the sliding valve on those "bargain electric units", double direction splitting system, and mechanical pressure release valve on all gas units, provide you with extraordinary consistent splitting, efficiency and durability, which you'll never experience on other brands.

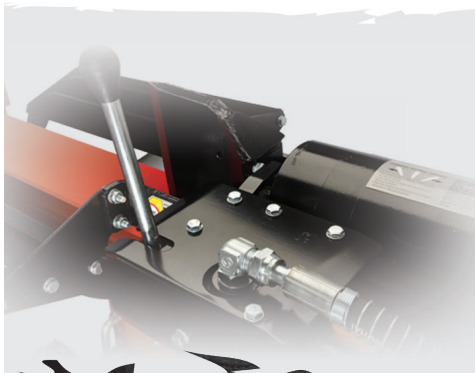
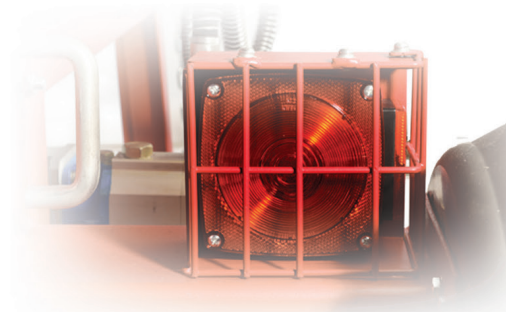


### FOCUS & SOLUTIONS

At Boss Industrial, our focus is on consumer satisfaction tied to performance, longevity, safety and solutions. We strive to ensure that all products outperform expectations. We offer solutions for all consumers with the widest range of log splitters from top rated electric models, fast-speed dual action series, varieties of tractor compatible 3PT hitch units to our commercial grade gas lines.

### SAFETY & MOBILITY

Our log splitters maximize ergonomics and mobility through conveniently located handles, larger wheels and optional add-on accessories. Extra wide log trays, single hand operation, and patented valve protector improve user performance and safety. At Boss Industrial, we cut no corners on design. Your safety and satisfaction is our NO. 1 priority.



### ENGINEERING & INNOVATION

We take great pride exceeding industry standards with our superior quality and performance. All Boss Industrial products are strictly inspected and tested prior to shipment. Pure copper wiring electric motors, industrial gear pumps, heavy duty gauge steel and pinpoint corner joint welding separate us from our competitors. Our innovative dual direction splitting gets your job done in half the time. All result in a longer life and greater value for your money.

## BOSS INDUSTRIAL, INC.

USA TOLL FREE: 1 (800) 780-BOSS(2677) • FAX: 1 (331) 472-2976  
SALES@BOSS-INDUSTRIAL.COM • WWW.BOSS-INDUSTRIAL.COM